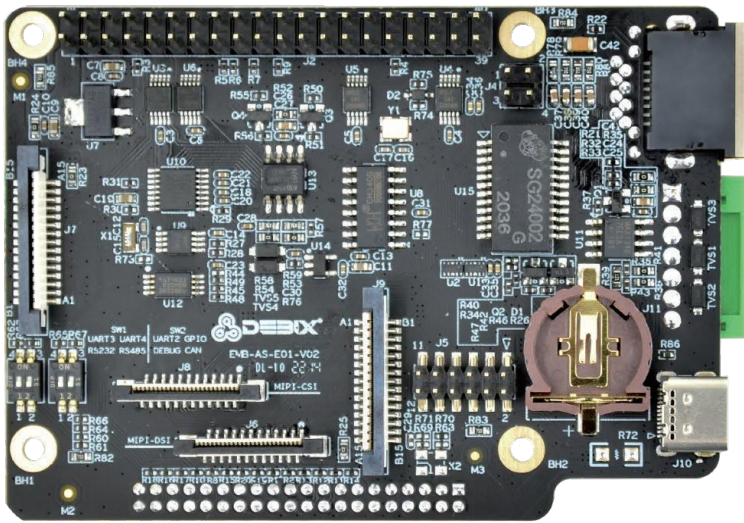




www.debix.io

DEBIX I/O Board



Industrial Computer



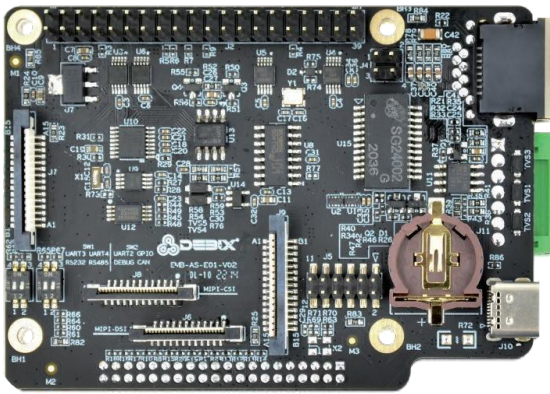
DEBIX I/O Board

Overview:

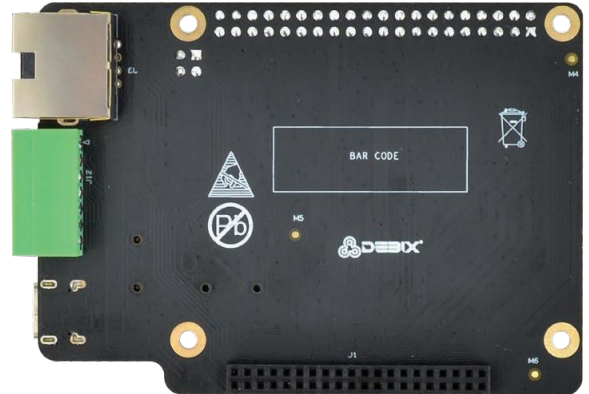
DEBIX I/O Board is an add-on board designed for DEBIX Model A, DEBIX Model B and is compatible with DEBIX Infinity. It adds one RJ45 Gigabit Ethernet interface and PoE capability to your DEBIX Model A/B. It comes with RS232, RS485 and CAN Transceiver to allow connection with more industrial equipment, and its strong expansion ability brings unlimited possibilities.

Compatibility:

Compatible with DEBIX Model A, DEBIX Model B, DEBIX Infinity



(Front View)



(Back View)

Specification:

I/O Interfaces

Gigabit Ethernet	1x Gigabit Ethernet port POE Supported (Compatible with POE power device module)
USB	1 x USB Type-C Debug (USB to Serial)
RTC	1 x RTC
Serial Ports	1 x RS232 1 x RS485
CAN	1 x CAN Transceiver
DIP Switch	2 x 2bit DIP Switch (used for selecting USB-Debug, RS232, RS485 and CAN)

Expansion

40-Pin Double-Row Headers	3 x UART, 2 x I2C, 2 x SPI, 2 x CAN, 6 x GPIO for default, can be reused as I2S, PWM, SPDIF and GPIO through software configuration.
MIPI CSI	1 x MIPI CSI
MIPI DSI	1 x MIPI DSI
EEPROM	1 x 2Kbit EEPROM

Accessories

Cables	2 x Flexible flat cable for DSI & CSI 1 x Female to female jumper wire for Ethernet
--------	----------------------------------------------------------------------------------------

Power Supply

Power Input	DC 5V/500mA
-------------	-------------

Mechanical

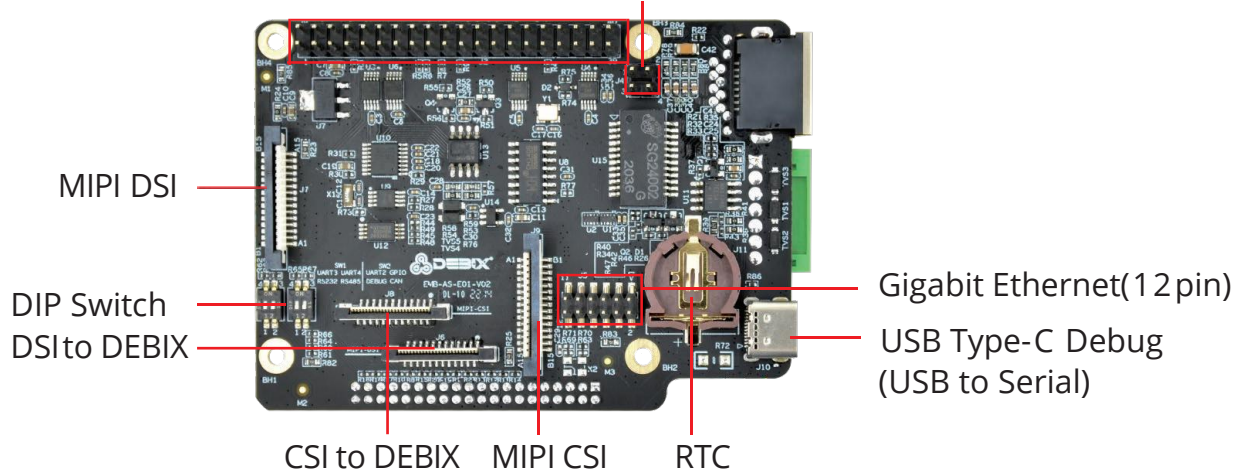
Size(L x W)	85.0mm x 61.2mm (±0.5mm)
Gross Weight	62g(±0.5g)
Net Weight	31g(±0.5g)

Certificates:



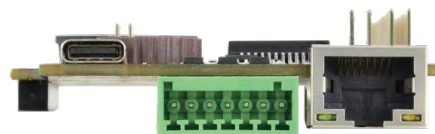
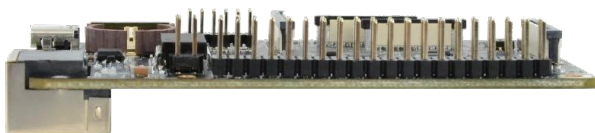
I/O Interfaces:

UART/I2C/CAN/GPIO/SPI... POE

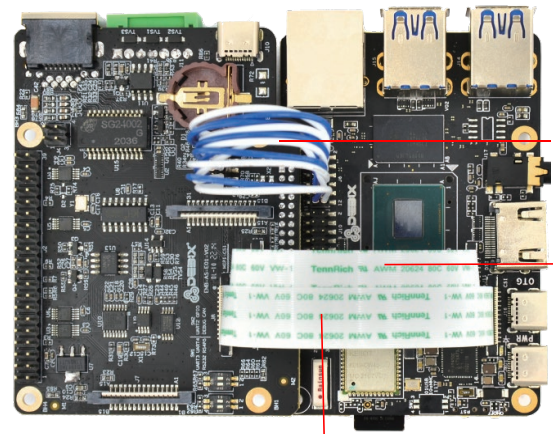
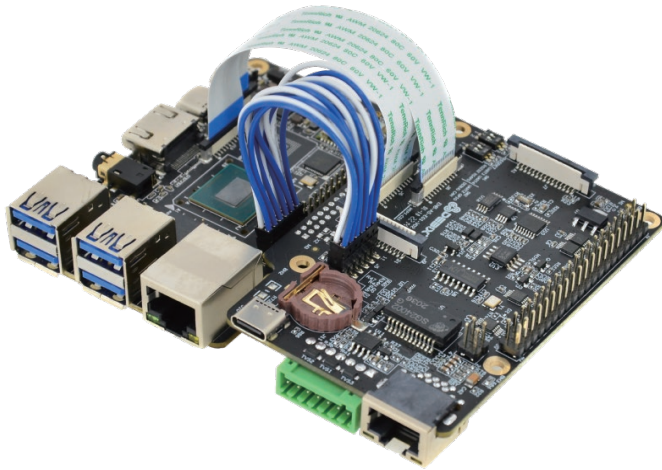
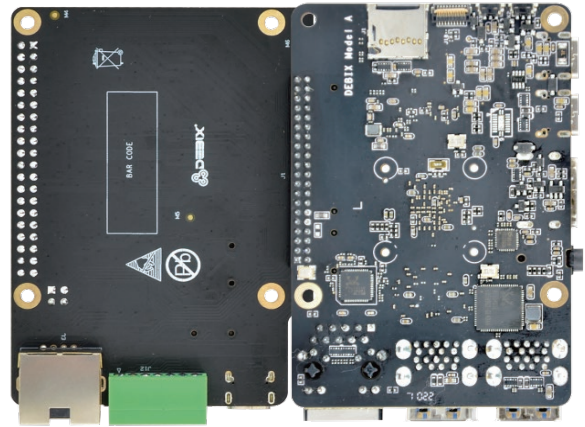
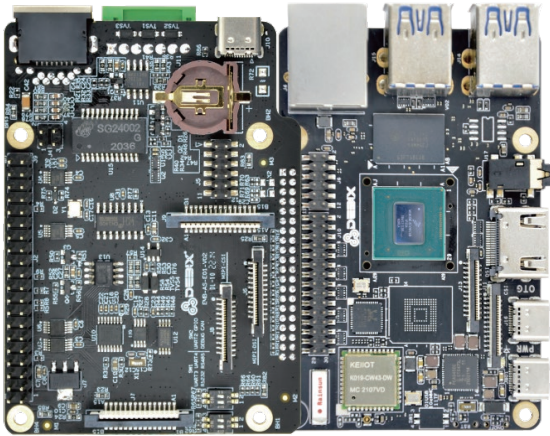


Gigabit Ethernet (TSN)
(Ethernet2 port)

RS232/RS485/CAN



Connection with DEBIX Model A/B:



12pin header
Connection

DSI
Connection

CSI Connection

Safety Instruction and Warnings:

General:

- Avoid exposure to water, moisture, and conductive surfaces while operating.
- Handle with care to avoid mechanical or electrical damage to the circuit board and connectors.
- Only handle the board by the edges when powered on to minimize the risk of electrostatic discharge damage.

Environment:

- Operate in a well-ventilated environment, even if using a case.
- Place on a stable, flat, non-conductive surface and avoid contact with conductive items.

Connections:

- Only connect compatible devices to the GPIO ports to avoid damage and warranty voiding.
- Use peripherals that comply with relevant standards for the country of use and ensure proper insulation and operation.

Additional notes:

- This summary is not exhaustive, please refer to the full User Manual for details.
- If you are unsure about any aspect of safety or operation, consult a qualified professional.

Contact Us:

Headquarters: DEBIX Technology Inc., 8345 Gold River Ct., Las Vegas, NV 89113, USA

Factory: 5-6/F., East Zone, Shunheda A2 Building, Liuxiandong Industrial Park, Xili, Nanshan

Dist., Shenzhen, China

Email: info@debix.io

Website: www.debix.io

Community: <https://discord.com/invite/adaHHaDkH2>

